

Polymer Clay Mini Gingerbread House Patterns

from BlondeCrowStudio.com



Have you ever wanted to make a gingerbread yurt? Viking Age longhouse? Maybe something a little more traditional?

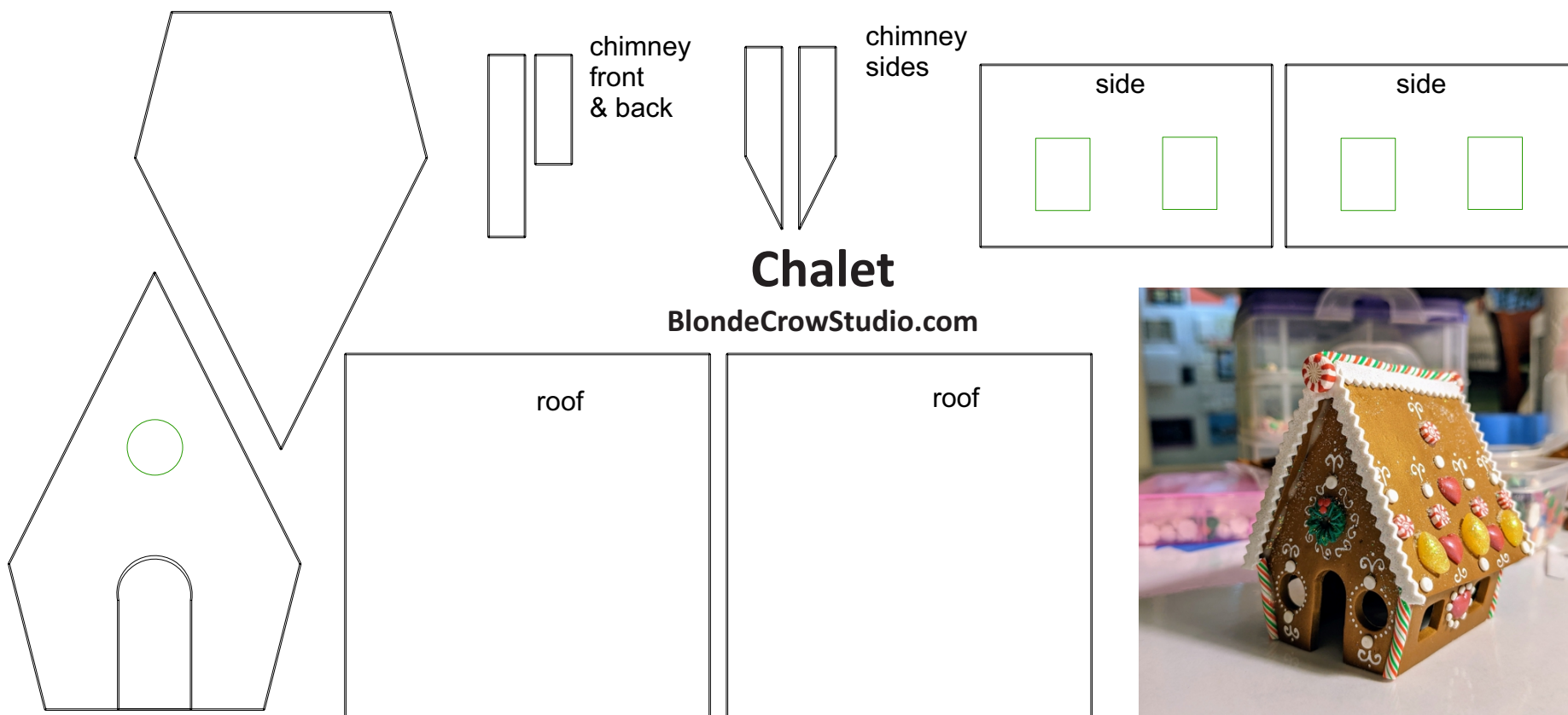
I created these polymer clay mini-gingerbread house patterns for anyone to download and use for free. Send me a photo! maria@blondcrowstudio.com

TIP 1: *The perfect gingerbread house color is equal parts Premo Burnt Umber and Premo Gold.*

TIP 2: *For icicles, mix white polymer clay with translucent liquid clay until it's just slightly drippy.*

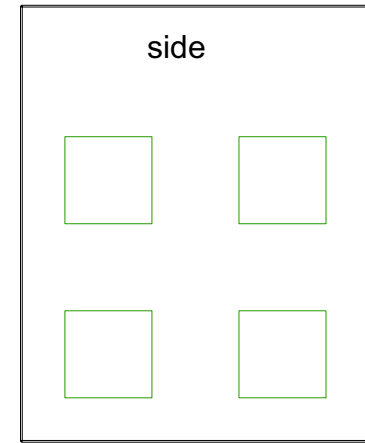
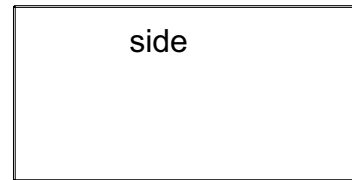
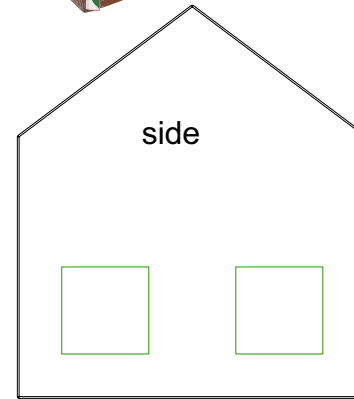
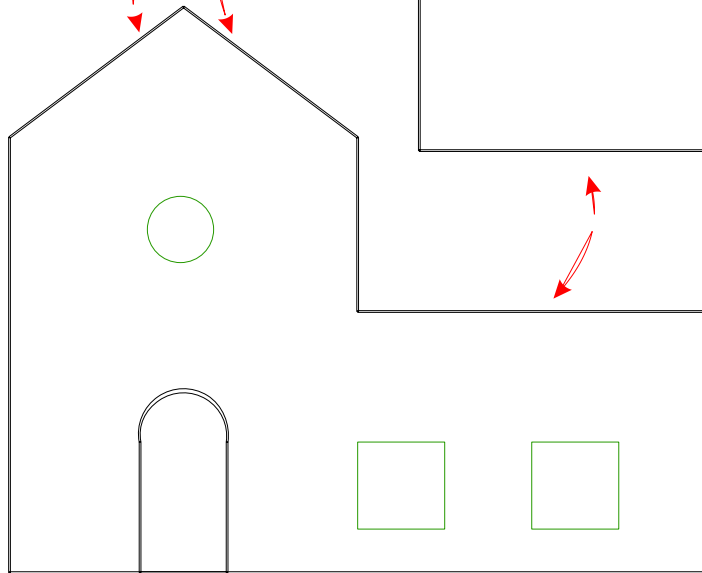
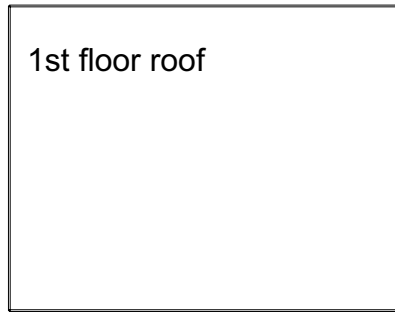
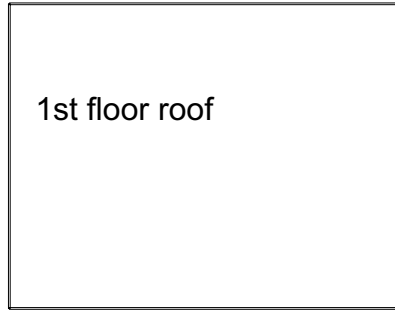
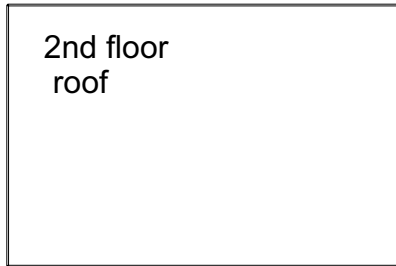
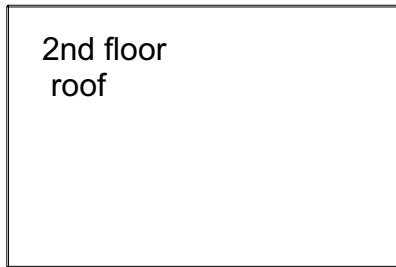
TIP 3: *For snow, mix white Super Sculpey Ultralight clay with a small amount of translucent liquid clay until it's fluffy looking.*

TIP 4: *Decorate and cure house pieces before assembling your house. Use Kato Poly Paste or Sculpey Bake & Bond to 'glue' house pieces together and then cure again.* Happy Claying, my Polymer Peeps!



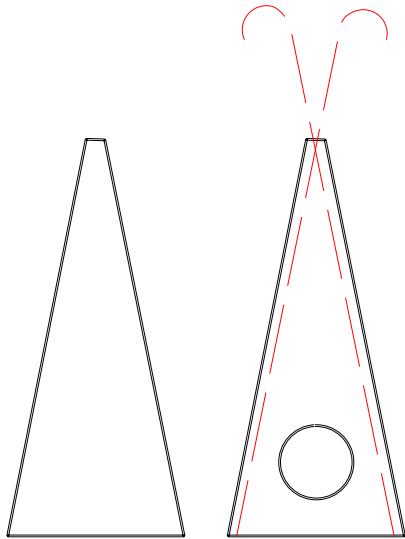
Two-story House

BlondeCrowStudio.com



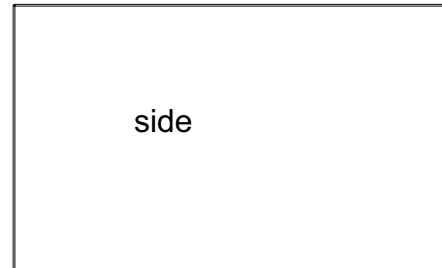
Tipi House

BlondeCrowStudio.com

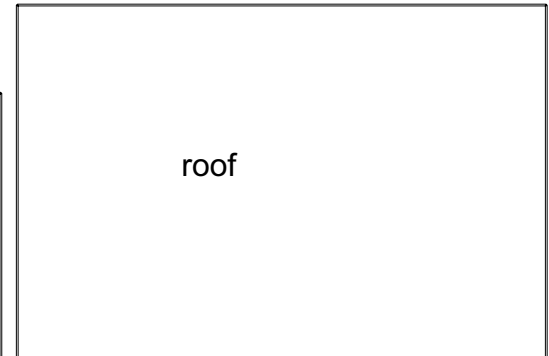


cut 8

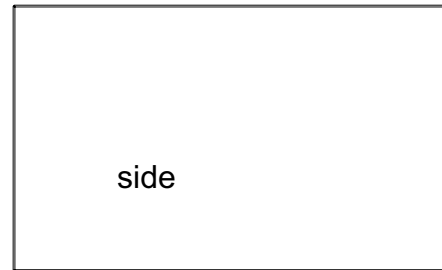
cut 1



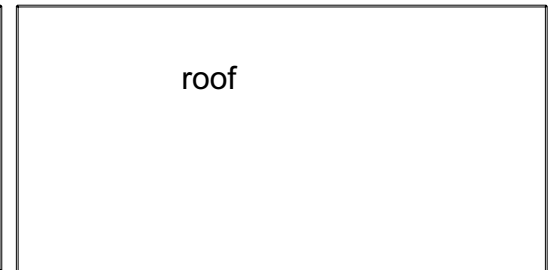
side



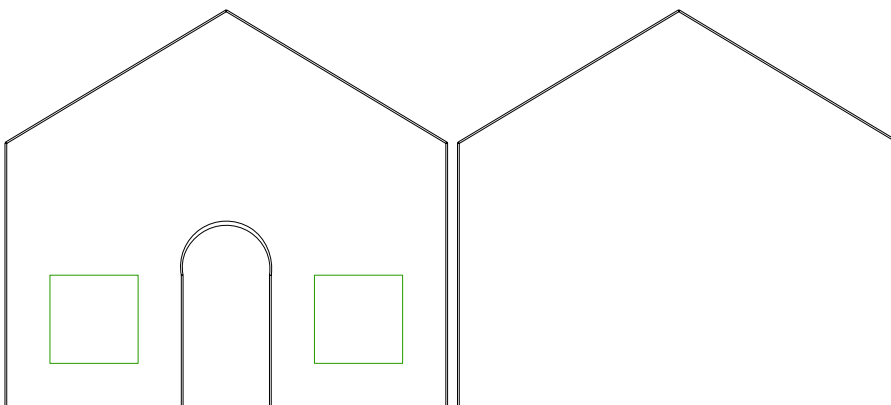
roof



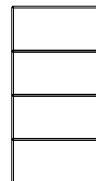
side



roof



stairs to door

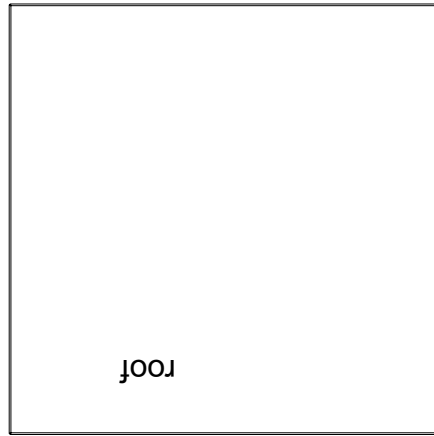




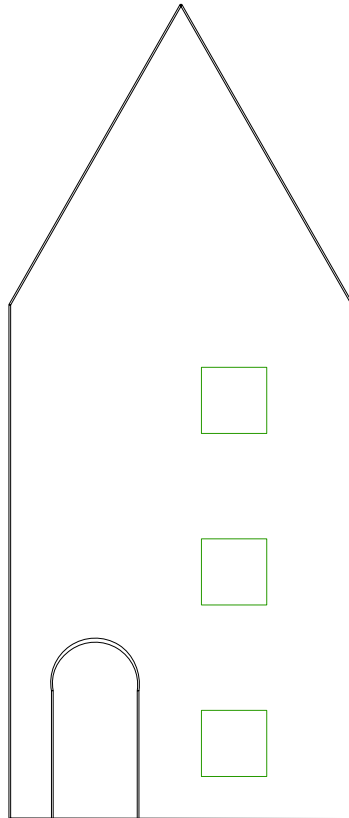
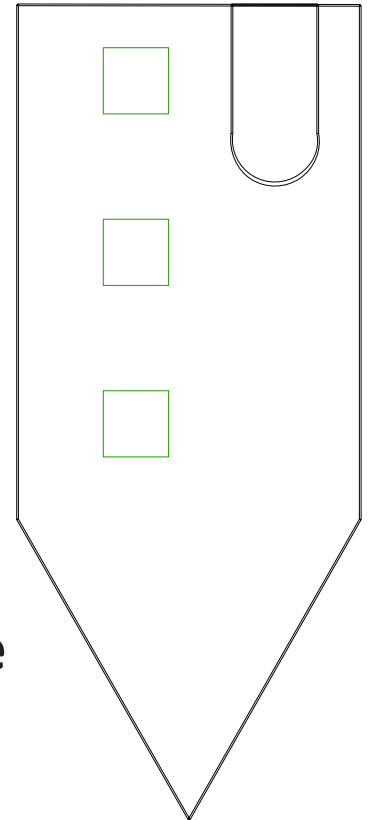
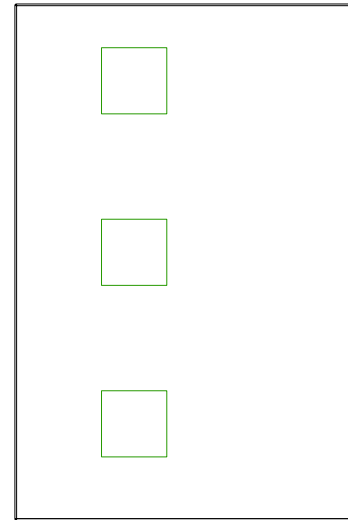
Blonde Crow Studio



Decorate with polymer candies, 1/4 size

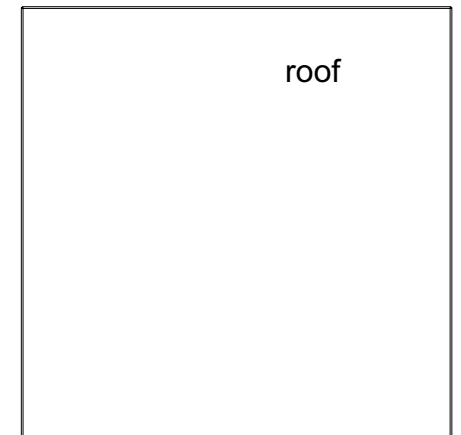
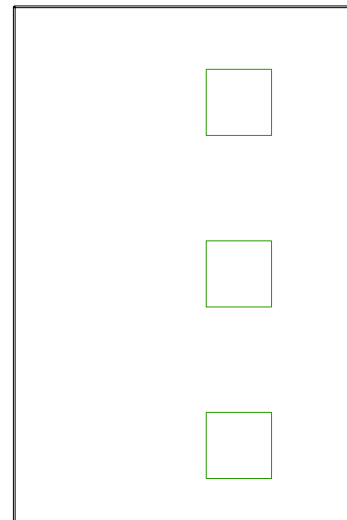


roof



Apartment House

BlondeCrowStudio.com

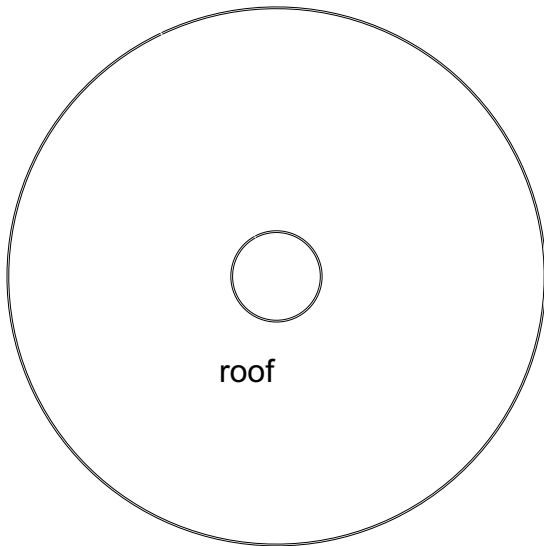


roof

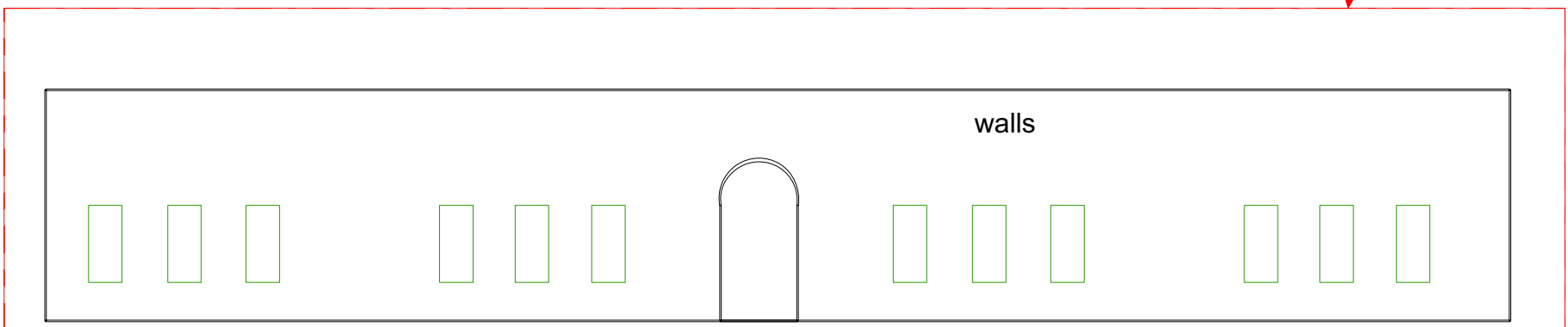
Andrea's Yurt

BlondeCrowStudio.com

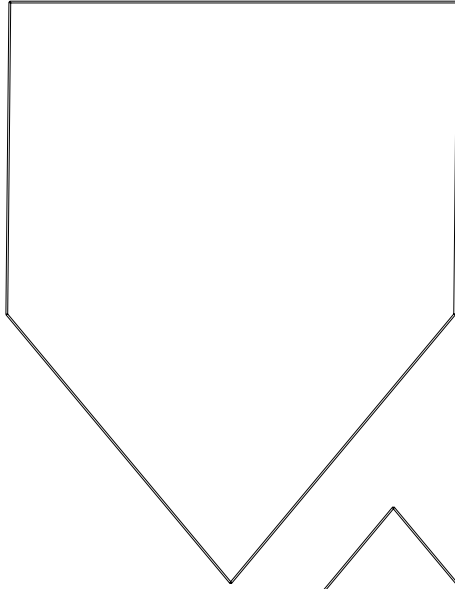
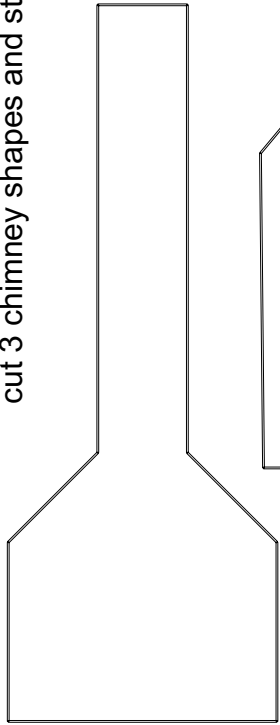
Lay the roof piece over an inverted glass or metal bowl while curing to get the dome shape. Cut a piece of paper slightly larger than the yurt 'walls' and form it in a tube shape. Wrap the 'walls' clay piece around your paper tube while curing.



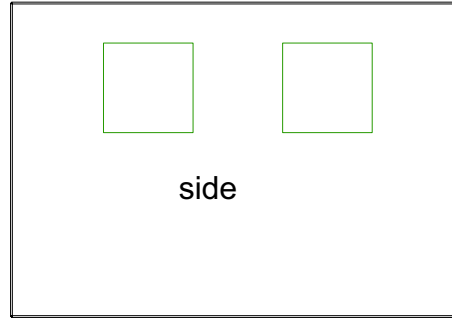
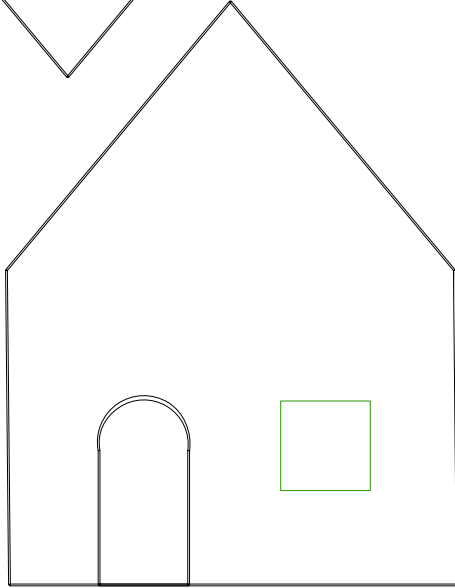
Use the red template to cut your form out of heavy paper



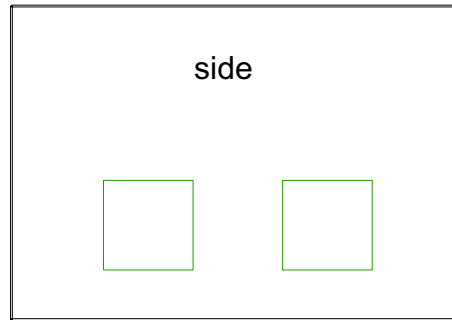
cut 3 chimney shapes and stack them to-



chimney wall



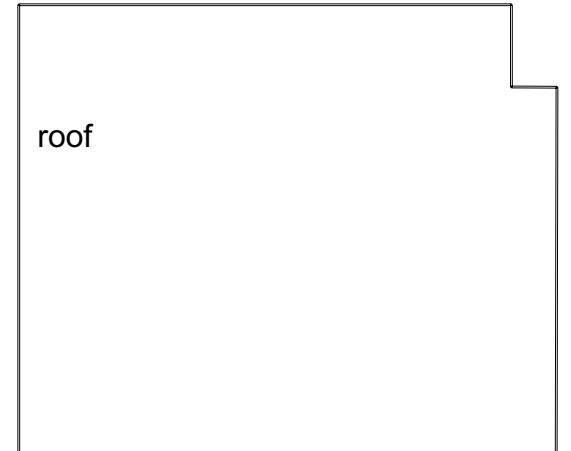
side



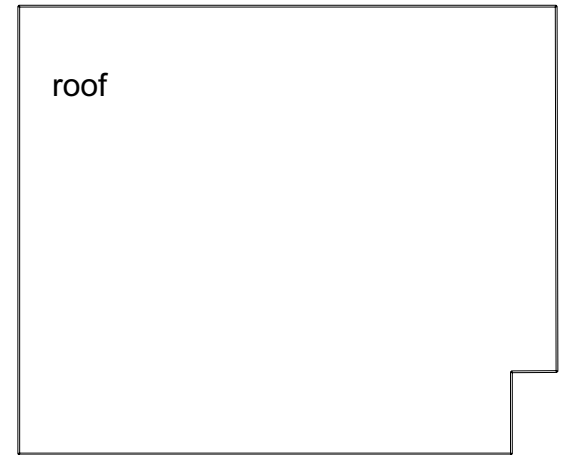
side

Chimney House

BlondeCrowStudio.com



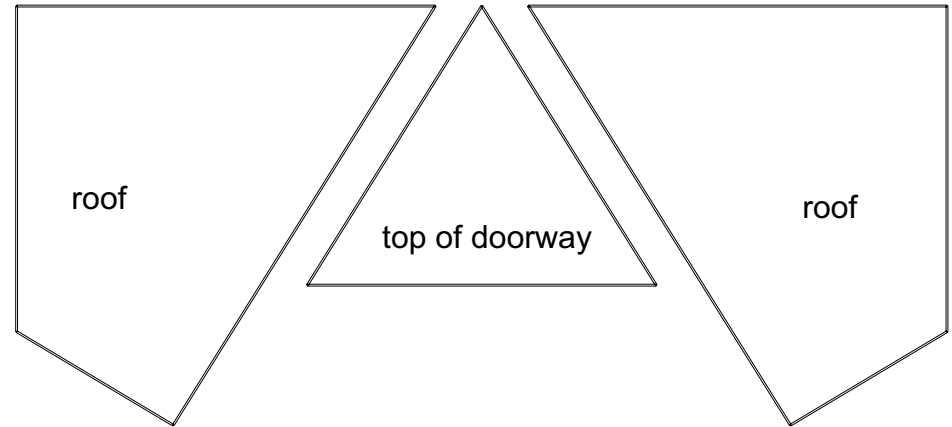
roof



roof



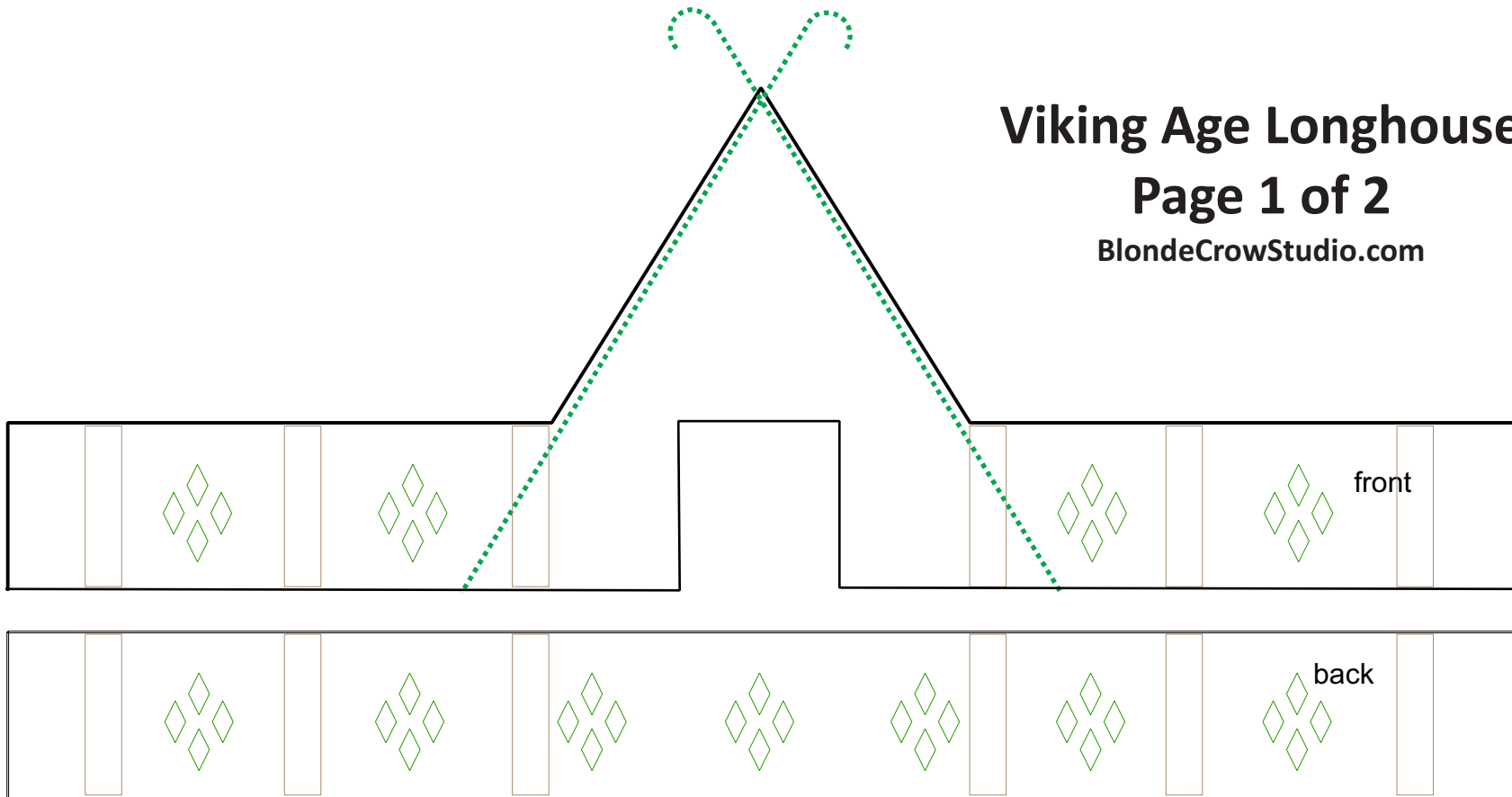
The dotted lines are your roof supports

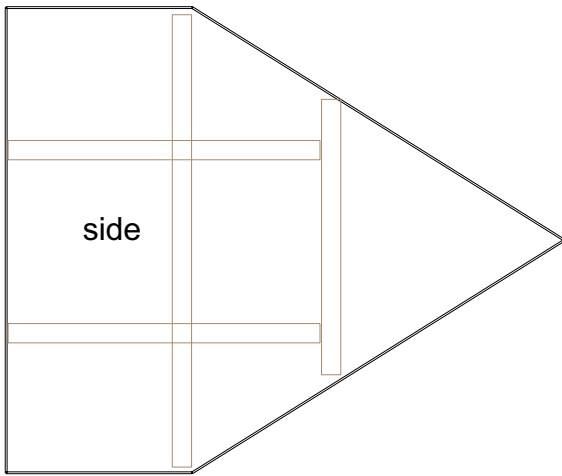


Viking Age Longhouse

Page 1 of 2

BlondeCrowStudio.com

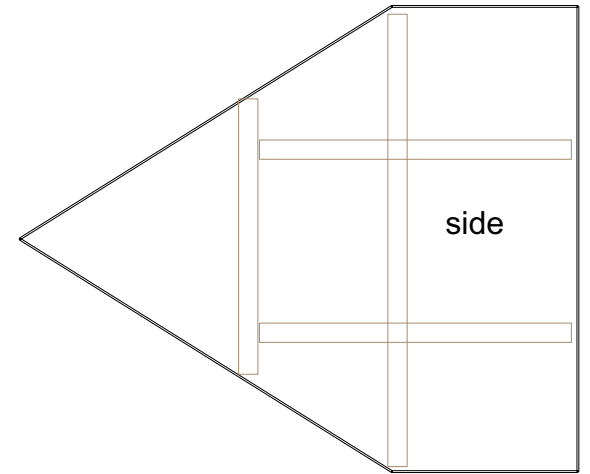




Viking Age Longhouse

Page 2 of 2

BlondeCrowStudio.com



Don't forget to cut your roof supports! See Page 1

