

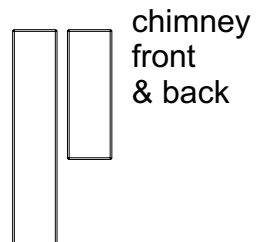
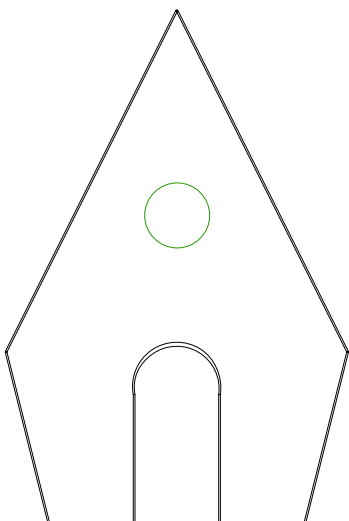
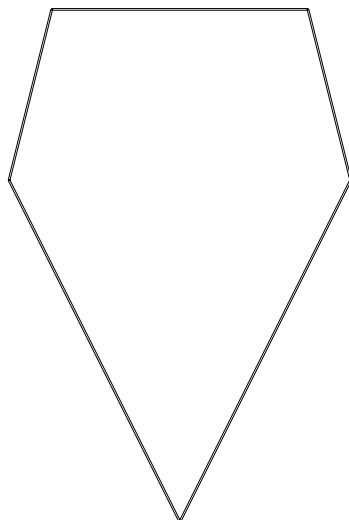
Chalet

I made these simple mini-gingerbread house patterns for a few of my clayer friends and myself.
(Please print and use my patterns free of charge, as long as you understand there are no warranties or guarantees.)

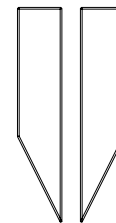
If you make anything with them I would LOVE to see a photo!

Thanks,
Maria

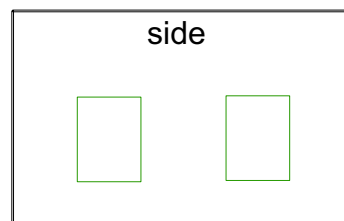
December 2016
mariajambrown@yahoo.com



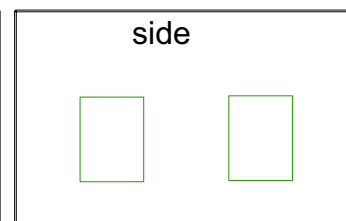
chimney
front
& back



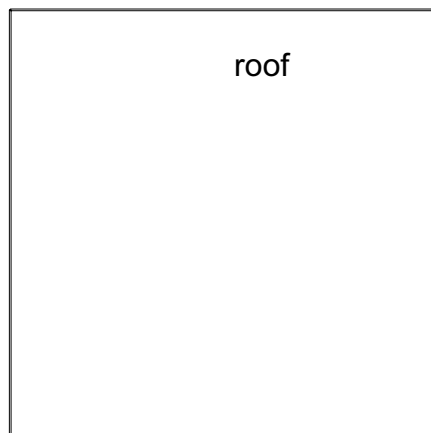
chimney
sides



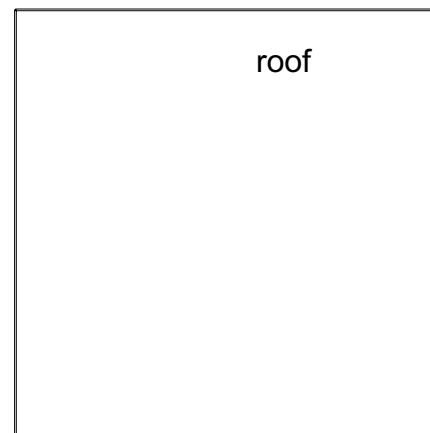
side



side



roof



roof



2nd floor
roof

2nd floor
roof

1st floor roof

1st floor roof

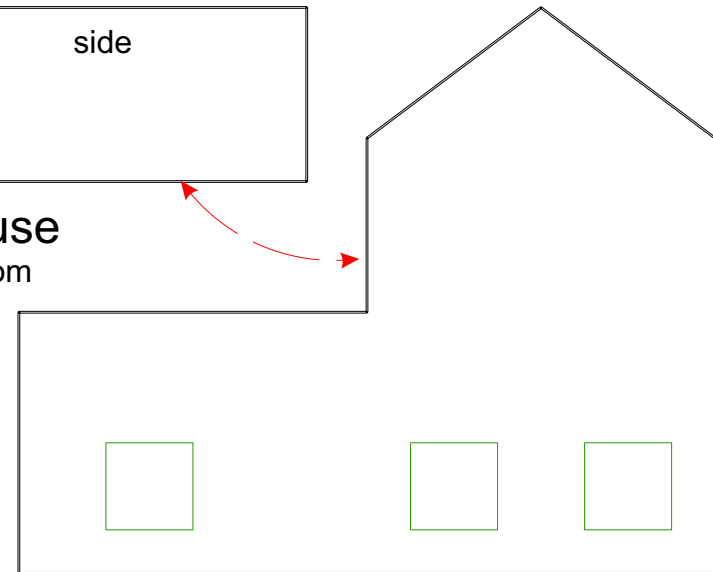
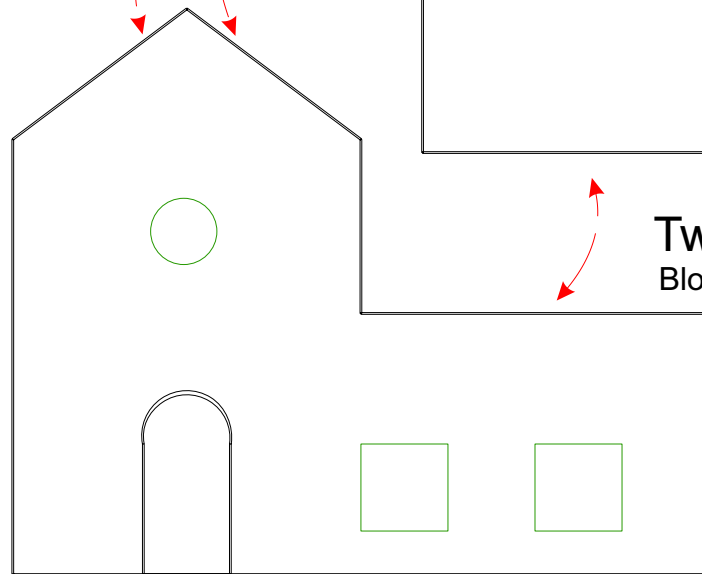
side

Four green square outlines arranged in a 2x2 grid.

side

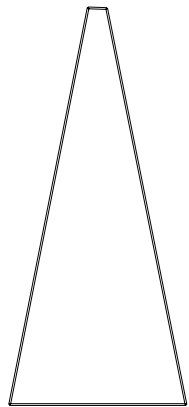
Two green square outlines arranged horizontally.

side

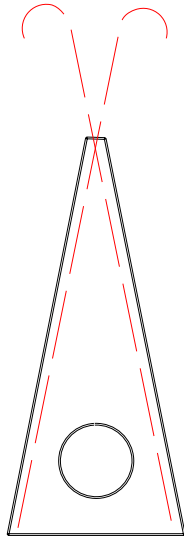


Two-Story House
BlondeCrowStudio.com

Teepee House



cut 8



cut 1

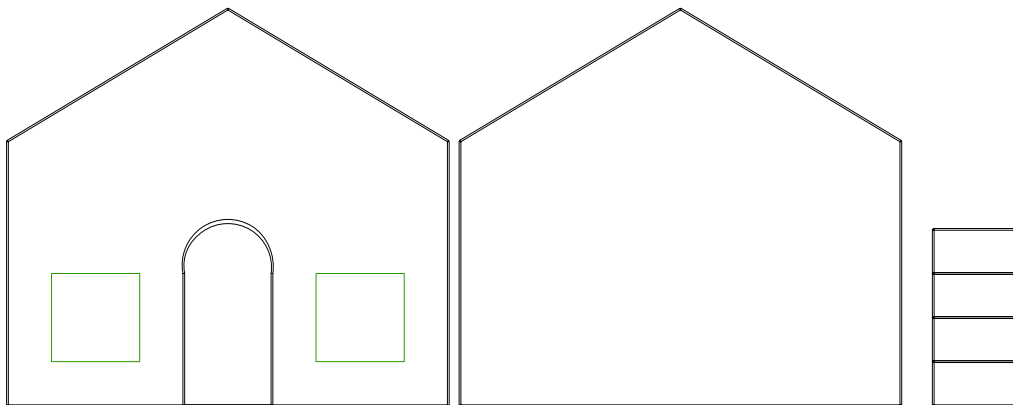
side

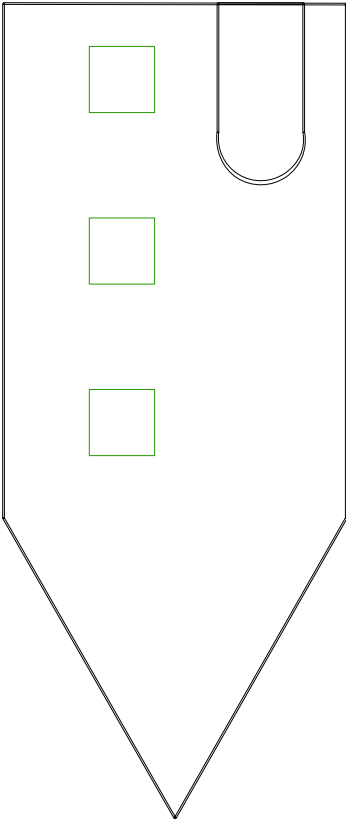
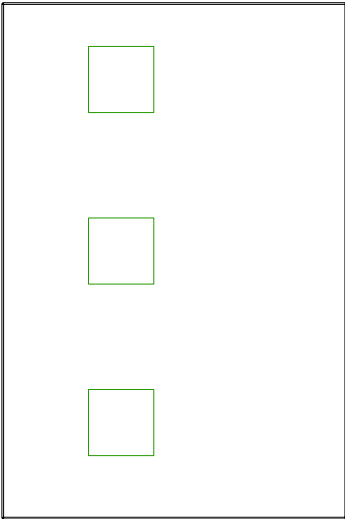
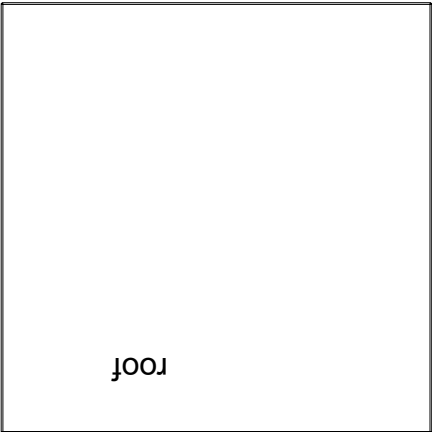
side

Norse Goat House

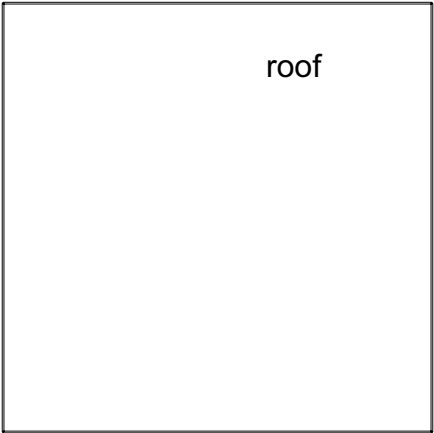
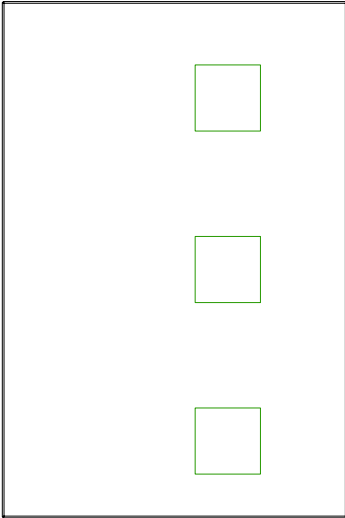
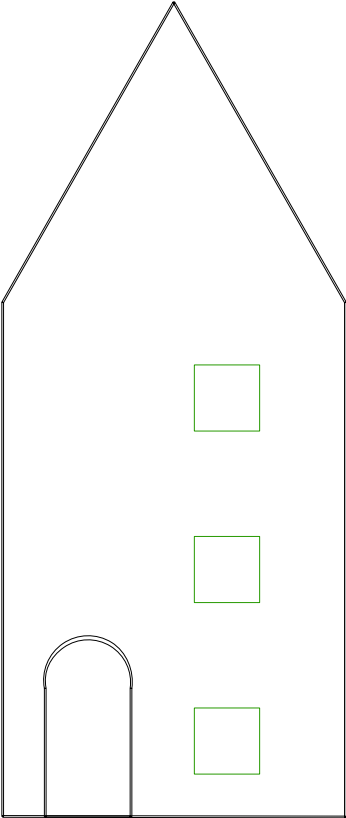
roof

roof



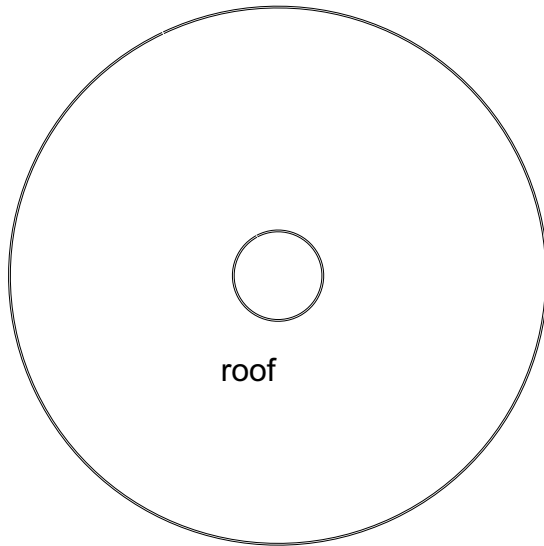


Apartment house

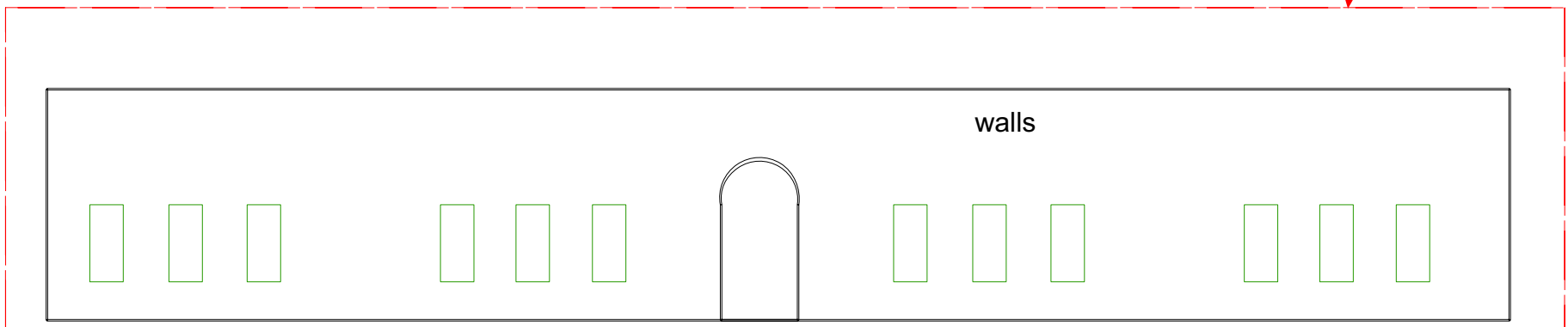


Andrea's Yurt

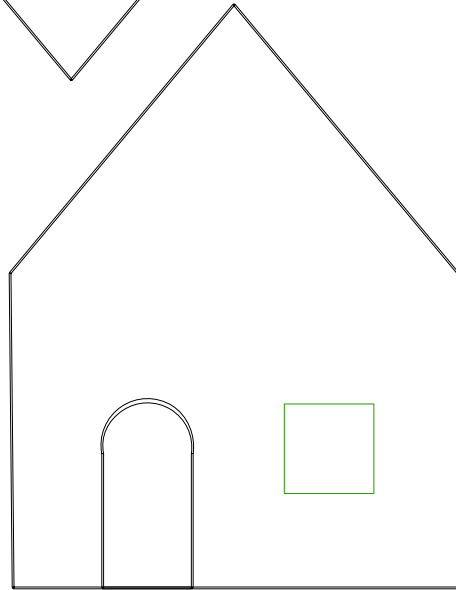
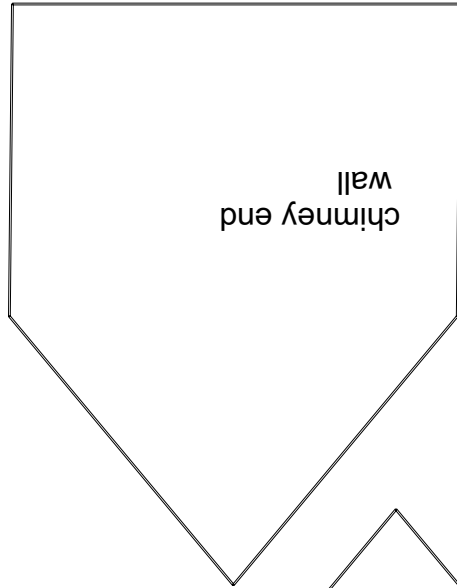
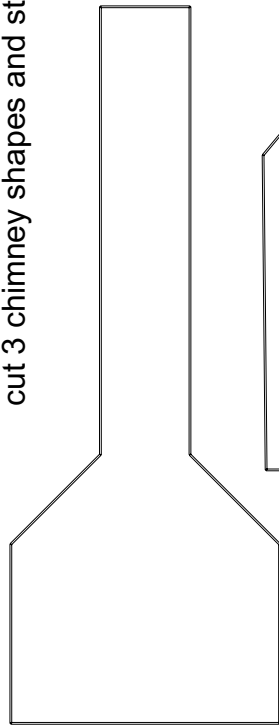
Lay the roof piece over an inverted glass or metal bowl while curing to get the dome shape. Cut a piece of paper slightly larger than the yurt 'walls' and form it in a tube shape. Wrap the 'walls' clay piece around your paper tube while curing.



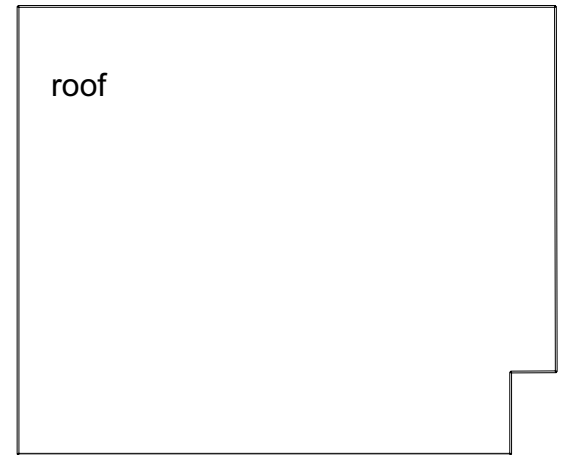
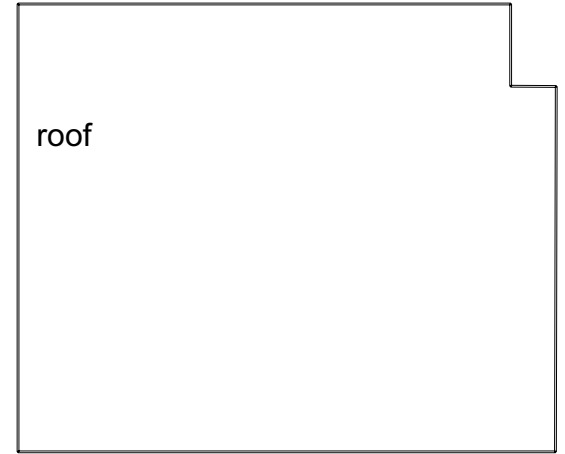
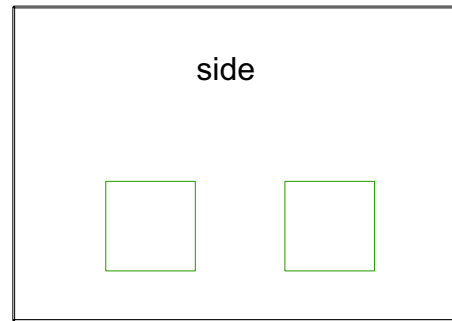
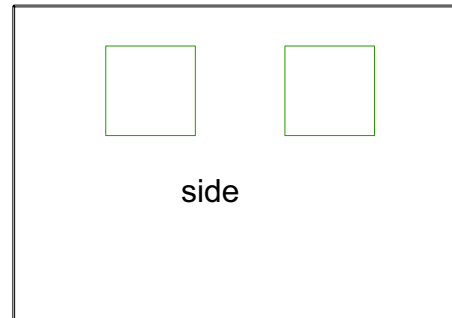
Use the red template to cut your form out of heavy paper

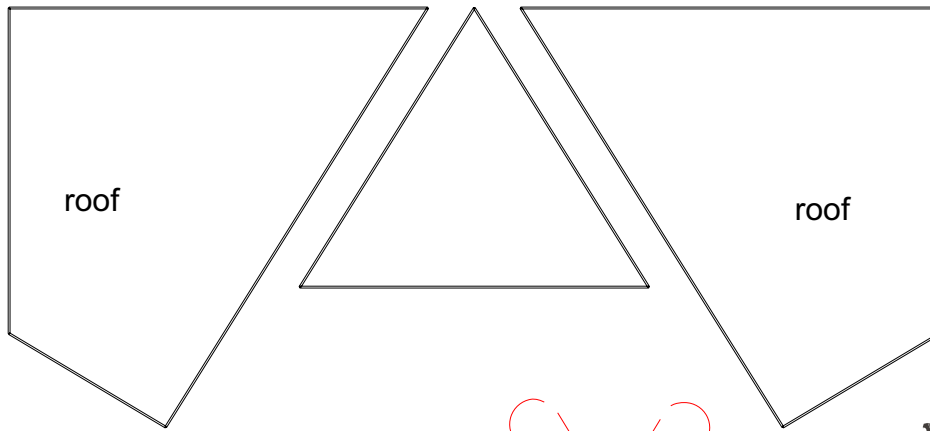


cut 3 chimney shapes and stack them to-

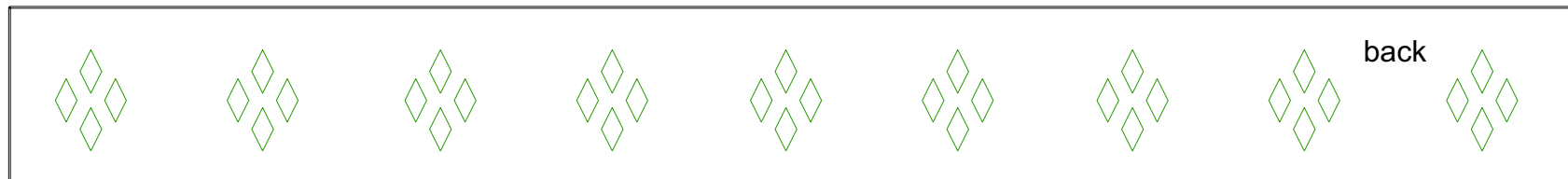
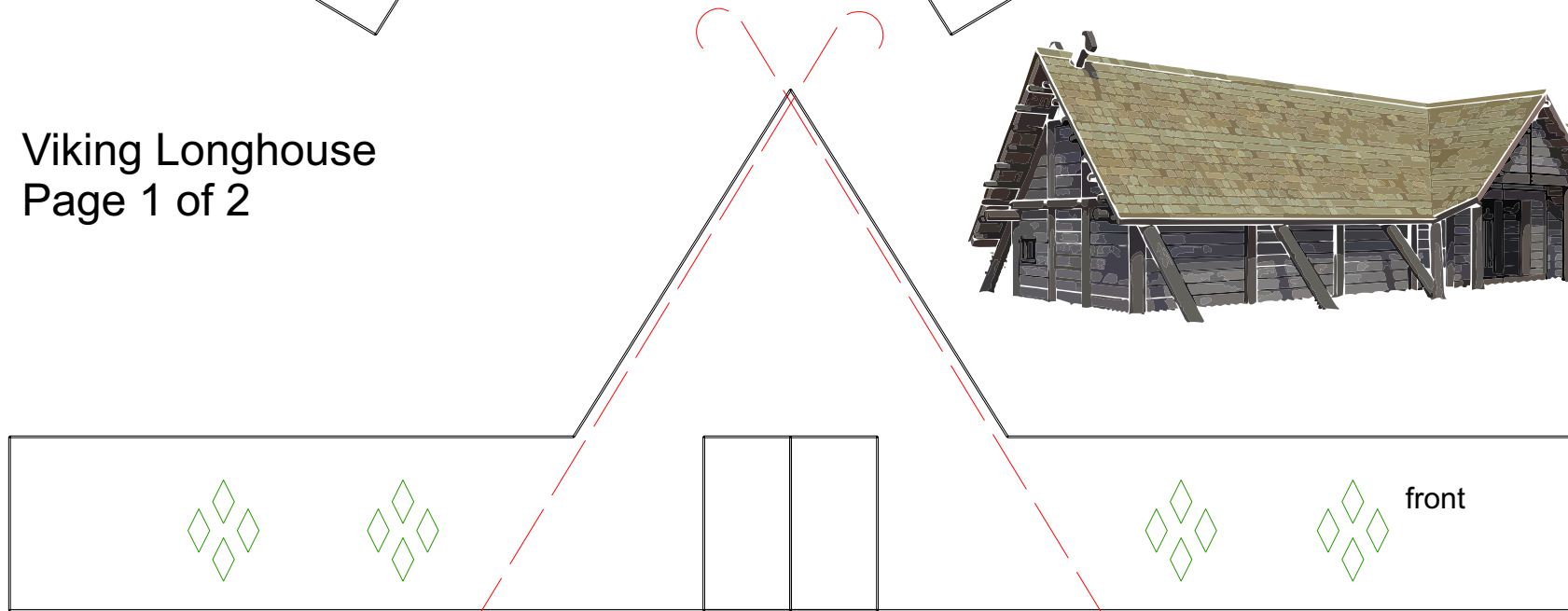


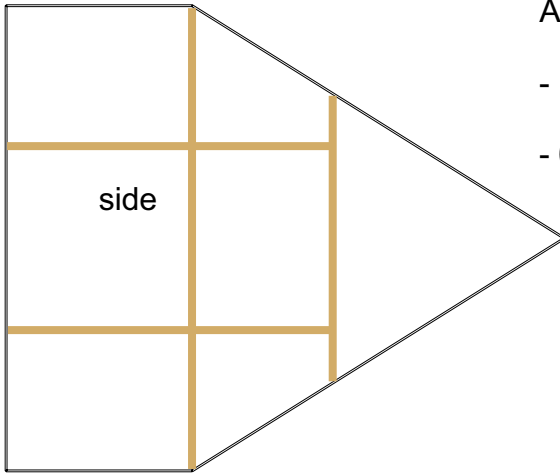
Chimney house





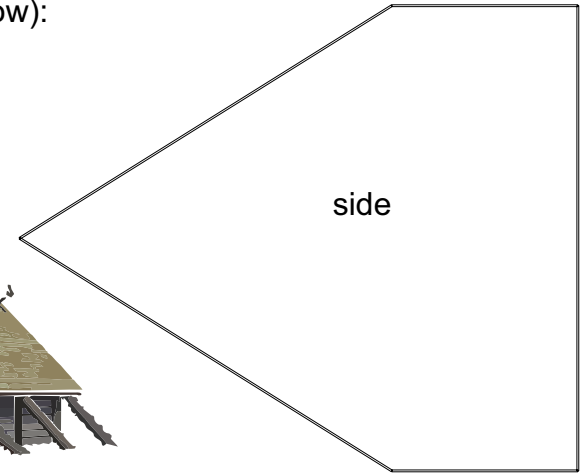
Viking Longhouse
Page 1 of 2





ADD your candy cane roof supports (see picture below):

- 16 each of $\frac{3}{4}$ " pieces
- 6 each of $4\frac{1}{2}$ " pieces



Viking Longhouse
Page 2 of 2

back roof

